

NASHVILLE, TENNESSEE

Mr. Easter is an experienced healthcare planner and designer with over 2,000 healthcare master plans and functional programs to his credit. A great deal of his experience is in ONCOLOGY as noted in the listing of projects herein. His most recent experience was Director of two cancer centers for the Community Health Network (CHN) in Indianapolis, IN. He was also a consultant to MD Anderson for 10 years and on staff as Director of Planning for 3 years prior to moving to Nashville to work with HCA and Quorum Health Resources (QHR).



RELEVANT EXPERIENCE:

Planning Executive and Owner For 30+ Years

- UT/MD Anderson, Houston, TX, Consultant to President and Senior Staff, Director of Planning
- HCA/QHR, Vice President, Director of Planning and Consultant on 67 Hospitals in 37 States
- Easter & Mason Healthcare Consulting, Principal and Senior Planner for 10 Years
- HFR Design, Brentwood, TN, Senior Vice President, Director of Planning and Principal
- Easter Healthcare Consulting, Nashville, TN, Principal and Director of Consulting Services
 - Major Planning Engagements for Oncology and Acute Care
 - Senior Staff and Leadership for Healthcare Providers
 - Current Master Plans for Tower/Reading Branch Medical School for 240 Students
 - Current Master Plans for 3 Critical Access Hospitals
 - Numerous Nursing Homes and Free Standing Ambulatory Care and FSED Projects

EMPLOYMENT HISTORY:

- Easter Healthcare Consulting, Founder/Principal. 2014-Present
- HFR Design, Brentwood, TN, SVP/Principal. 2005-2013
- Easter & Mason Healthcare Consulting, Founder/Principal. 1995-2005
- HCA/Quorum Health Resources. 1990-1995
- UT/MD Anderson. 1978-1984 Consultant and Director Planning 1984-1987

EDUCATION:

- Virginia Tech (VT), Masters of Architecture With Healthcare Emphasis. 1972
(Recipient of the AIA/AHA Graduate Design Fellowship for Hospital Design)
- Virginia Tech (VT), Bachelor of Architecture. 1970

PROFESSIONAL:

- Member of the AIA Academy of Architects for Health
- Associate Member of the Tennessee Hospital Association (THA)
- Associate Member of the American Hospital Association (AHA)
- Member of the American College of Healthcare Executives and Chair, Membership Committee
- Past Chairman of the Board of the American Academy of Medical Administrators (AAMA)

SPEAKING ENGAGEMENTS :

"Managing Assets Starts With A Comprehensive Master Plan", the National Institute of Building Sciences, Conference and Exposition on Building Innovation, James G. Easter, Jr., Principal, Easter Healthcare Consulting (Ehc) Washington, DC, January 8, 2019.

"POPULATION HEALTH: People, Process, Planning and Design for Better Outcomes", Illinois Critical Access Hospital Network (ICAHN), 2018 for 15th Annual Conference, Michael Neuser, HFR Design and James G. Easter, Jr., Principal, Easter Healthcare Consulting (Ehc), Nashville, TN, October 30, 2018, Champaign, IL.

"CHANGE and TRANSFORMATION of Care and Caring With Architects & Engineers on the TEAM", Nebraska Society of Healthcare Engineers (NSHE), James G. Easter, Jr., ACHE, MARCH, Principal, Easter Healthcare Consulting (Ehc), Omaha, Nebraska, October 25, 2018.

"Building on The PLANETREE Base of Success", Planetree Annual Conference, James G. Easter, Jr., Principal, Easter Healthcare Consulting (Ehc), Nashville, TN, October 8, 2018, Boston, Massachusetts.

"Patient-Centered Programming: Form, Function, Economy and Time", PDC Summit, 2018 Annual ASHE/AIA International Summit and Exhibition on Health Facility Planning, Design and Construction, Nashville, TN, James G. Easter, ACHE, Principal Ehc, Tom Testerman, ACHA, HFR, Debbie Gregory, DON, Consultant SSR, Andy Collignon, JD, AIA, Principal of Starting Pointe, March 28, 2018.

"Continuum of Senior Care: A Comprehensive Perspective", THCA/TNCAL Annual Meeting, Nashville, TN, James G. Easter, ACHE, Principal, Ehc, Tom Testerman, ACHA, HFR Design, Judy Eads, Jennifer Bouldin, CEO, Deborah Gregory, Doctorate Nursing, SSR, Derek McLaren, LBMC, and Ross Church, MBA, PE, Noveen, August 27, 2017.

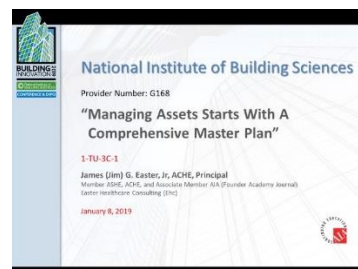
"No Margin, No Mission, No Master Plan", Nebraska Hospital Association, Spring Training and Educational Session, Omaha, NE, Patrick Leahy, Architect, Holland Basham Architects, Jeff Prochazka, VP Strategy, The Methodist System and James G. Easter, Jr., FAAMA, Principal, Easter Healthcare Consulting (Ehc), Jun 28, 2016.

"Critical Access Hospitals and Rural Business Strategies", Nebraska Hospital Association, Mid-Year Meeting of ACHE Membership, Kearney, NE, Patrick Leahy, Architect, Holland Basham Architects, Jeff Prochazka, VP Strategy, The Methodist System and James G. Easter, Jr., FAAMA, Principal, Easter Healthcare Consulting (Ehc), May 21, 2015.

"Aviation and Healthcare Planning: Common Threads", The AIA of Kansas and Missouri, Kansas City, MO, Hosam Habib, VP, AIA, HWA Architects and James G. Easter, Jr., FAAMA, Principal, Easter Healthcare Consulting (Ehc), February, 2015.

"Needs Based Master Planning: Build It and They Might Not Come", The National Summit of Medical Administrators (AAMA), Clearwater, FL, James G. Easter, Jr., FAAMA and Andrew McDonald, FACHE, January, 2015.

"A Master Plan: Healthcare's Evolving Delivery Needs Change The Design Process", Nashville Medical News, by Cindy Sanders, interview with James G. Easter, Jr., FAAMA and Brandon Harvey, Associate AIA, March, 2014.



The Illinois Critical Access Hospital Network
15th Annual Conference
Honoring the Past, Celebrating the Future
Illinois Critical Access Hospital Network
October 30th - 31st AM and PM 2018



5 How Are Providers Adjusting to Changes from an A/E/C/S Perspective (CQ and Process Change With Clinicians Involved)?



Nebraska Society of Healthcare Engineers
Annual Fall Meeting

Thoughts Shared With YOU From A Year of Transition & Change (NSHE, ASHE, ICAHN, Planetree, CMS, Consumers, Providers and Third Party Payers)



"Building on the Planetree Base of Success"

October 8, 2018
Annual Meeting
Boston, Massachusetts

HFR DESIGN



“Emergency Medicine is the Window to Affordable Healthcare: Less Works Best Through Efficient Operations”, AAMA 2014: The National Summit of Medical Administrators Pre-Conference Session, Las Vegas, NV, Tom Testerman, ACHA, Architect, Kerrie Cardon, RN, AIA, ACHA, Healthcare Architect - Herman Miller, James DiGiorgio, President, Applied Knowledge, Todd Warden, MD, Founder *emergenuity*, John Wheary, DO, MBA, FACEP, EVP, *emergenuity*, James G. Easter, Jr., FAAMA, Team Leader, February 25, 2014.

“The Master Plan Works Best When Functions and Programs are Needed and Aligned”, AAMA 2014: The National Summit of Medical Administrators, Las Vegas, NV, Tom Testerman, ACHA, NCARB, Architect and James G. Easter, Jr., FAAMA, Team Leader, Scheduled for February 28, 2014.

“Meaningful Healthcare Planning: A New Era for Needs Analysis Plus Creative Design”, September, 2013, The AIA Academy Journal, 2014 Edition, James G. Easter, Jr., FAAMA.

“Creative Master Planning Builds Bridges To Innovative Design and Reduced Capital Costs”, 2013 Health Facility Institute 24th Annual Conference, Williamsburg, VA, James G. Easter, Jr., FAAMA, Team Leader, Robert Harrett, AIA, ACHA and Tom Testerman, ACHA, Architect, Oct. 28, 2013.

“The Neurosciences Continuum: State of the Union and Integrating a Seamless Process With Patients As The Priority”, 2013 American College of Neurosciences Administrator (ACNA) Conference, Las Vegas, NV, November 19 – 22, 2013, Candace Tillquist, MA, Administrative Director, Neurosciences Patient Care Center, Pain and Spine Center, Vanderbilt Medical Center, Ashley Ford, Senior Consultant For Neurosciences and Orthopedics, the Advisory Board Company and James G. Easter, Jr., FAAMA, Team Leader, April 10, 2013.

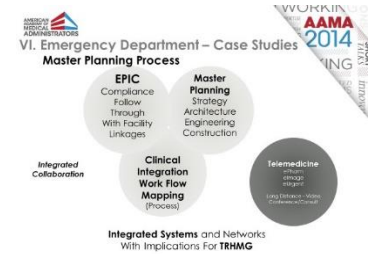
“Now You’ve Been Hired As Architect, What’s Next?”, 2012 AIA Kansas City Architects Educational Forum, Focus on Ambulatory Care, Cancer Care and Planning Services, James G. Easter, Jr., FAAMA, Team Leader, May 1, 2012.

“Heart Center Planning: Bundling Services, Architecture and Fees”, 2012 ACCA Cardiovascular Administrators’ Leadership Conf, Chicago, IL, James G. Easter, Jr., FAAMA, March 23, 2012.

“Groundbreaking Approaches to Healthcare Design and Sustainability: Essential Components of the Master Plan For Effective and Efficient Healthcare Facilities, Snap Shots Into Our Future”, Round Table Discussion, 2nd Healthcare Development Conference, James G. Easter, Jr., FAAMA, MARCH, Brad Taylor, CHFM, SSM DePaul Health Center, Ross Church, PE, LEED AP, EEI, Pete Sabeff, PE, LEED AP, EEI, Chicago, IL, October 27, 2011.

“Design For Improving The Healing Process: Planetree Plus Architecture Plus Planning”, Round Table Discussion, Design and Health 7th World Congress and Exhibition, James G. Easter, Jr., FAAMA, MARCH, Boston, MA, July 8, 2011.

“Urban Planning Beyond The Hospital: A Collaboration With Our Community, Consumers and Business”, Healthcare Environments For Aging, James G. Easter, Jr., FAAMA and Tom Phillips, AICP, Atlanta, GA, March 22, 2011.



What is Programming in a Traditional Sense?

FUNCTION	GOALS	FACTS	CONCEPTS	NEEDS	ISSUES
People	To create a more efficient hospital	Healthcare facilities are complex, multi-functional, and multi-phased. They are also highly regulated and subject to change.	We prefer the Planetary Concept	Healthcare facilities are complex, multi-functional, and multi-phased. They are also highly regulated and subject to change.	Healthcare facilities are complex, multi-functional, and multi-phased. They are also highly regulated and subject to change.
Form	Healthcare facilities are complex, multi-functional, and multi-phased. They are also highly regulated and subject to change.	Healthcare facilities are complex, multi-functional, and multi-phased. They are also highly regulated and subject to change.	Healthcare facilities are complex, multi-functional, and multi-phased. They are also highly regulated and subject to change.	Healthcare facilities are complex, multi-functional, and multi-phased. They are also highly regulated and subject to change.	Healthcare facilities are complex, multi-functional, and multi-phased. They are also highly regulated and subject to change.
ECONOMY	Healthcare facilities are complex, multi-functional, and multi-phased. They are also highly regulated and subject to change.	Healthcare facilities are complex, multi-functional, and multi-phased. They are also highly regulated and subject to change.	Healthcare facilities are complex, multi-functional, and multi-phased. They are also highly regulated and subject to change.	Healthcare facilities are complex, multi-functional, and multi-phased. They are also highly regulated and subject to change.	Healthcare facilities are complex, multi-functional, and multi-phased. They are also highly regulated and subject to change.
TIME	Healthcare facilities are complex, multi-functional, and multi-phased. They are also highly regulated and subject to change.	Healthcare facilities are complex, multi-functional, and multi-phased. They are also highly regulated and subject to change.	Healthcare facilities are complex, multi-functional, and multi-phased. They are also highly regulated and subject to change.	Healthcare facilities are complex, multi-functional, and multi-phased. They are also highly regulated and subject to change.	Healthcare facilities are complex, multi-functional, and multi-phased. They are also highly regulated and subject to change.



Planetree + Architecture

“Design For Improving The Healing Process”
July 8, 2011

Presented by
Jim Easter, FAAMA, SVP
Principal in Charge of Pre-Design and Healthcare Planning

